

TEAMWORK | INNOVATION | DETERMINATION

OSMH

FOUNDATION

From Fear to Recovery

One Patient's Journey of Healing at Orillia Soldiers' Memorial Hospital

PAGE 8

Community Impact

Community brings MRI & Hysteroscope equipment to OSMH

PAGE 12 + 14

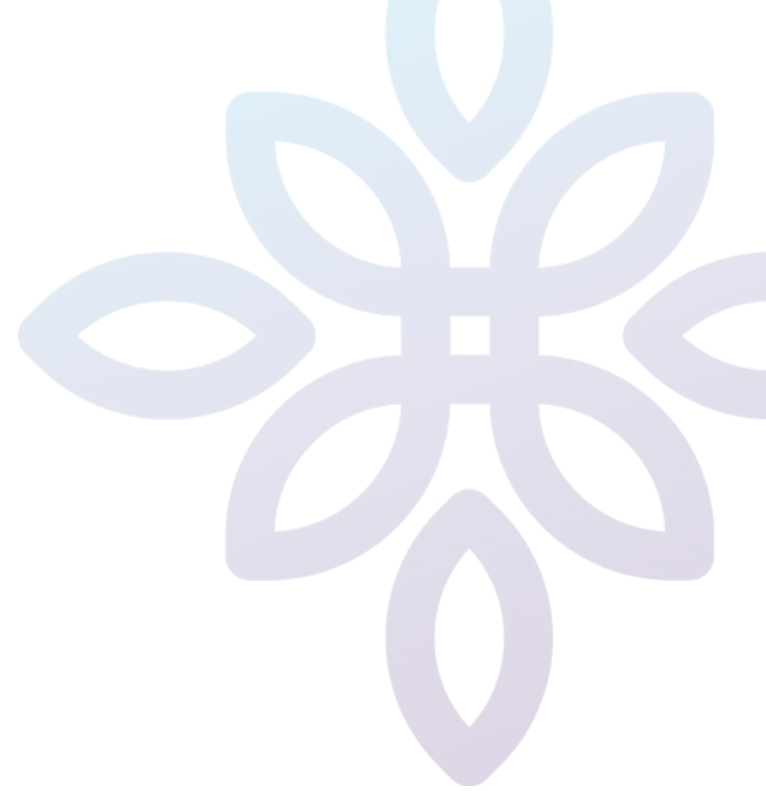
Looking Forward

How our values are shaping the future of our Foundation and Communities

PAGE 19

Table of Contents

Welcome	03
Epic Tale • Baggage + Luggage	04
Noreen Banks' Lasting Legacy	06
Mental Health Safe Rooms	07
Grateful Patient Story • From Fear to Recovery	08
Old Equipment Gets New Life	09
Foundation Revenue + Statistics	10
MRI Update	13
We Asked, You Answered • Hysteroscope Update	14
OSMH At A Glance	15
Foundation Values	16
Our Team	17
Future of OSMH and Looking Forward	19



Land Acknowledgement ●○●●



Orillia Soldiers' Memorial Hospital would like to acknowledge that we are situated on the traditional territory of the Anishinaabek Nation. We acknowledge the enduring presence of the First Nations, Metis, and Inuit peoples of this region, specifically the Tri-Council First Nations comprised of the Beausoleil First Nation, the Chippewas of Rama First Nation, and the Chippewas of Georgina Island. We also acknowledge Moose Deer Point First Nation, the Wahta Mohawks, and the Georgian Bay and Moon River Metis Councils. It should also be noted that the Wendat and the Haudenosaunee Nations have also walked on this territory over time.

Welcome



A reflection on this past year takes us through a journey of history, discovery, and growth.

As new leaders to the OSMH Foundation team, it was important for us to start by understanding the deep history of the Foundation and its profound connection to our communities.

Last year, we spent time with our volunteers, donors, and community members to listen and learn about your experiences and your connection to the hospital and the Foundation. More of this work can be found on pages 4 & 5.

What we discovered to be certain is that your commitment to Soldiers', over nearly four decades, has brought world-class healthcare closer to home.

It is from community support that major expansions and redevelopment have occurred throughout the hospital's history. Advancements in technology, newly developed, life-saving equipment, training and education for staff, and programs to support growing health concerns, such as rehabilitation and mental health, are available to our communities.

As we look ahead to 2024 and beyond with this historical knowledge and appreciation of your generosity, we are focused on philanthropic growth.

There is growth happening all around us. The population of our surrounding communities continues to expand. Our hospital will adapt and advance to meet the needs of those it serves, and we will provide the resources that support our communities now and for generations to come.

We can do it with your support!

It is our hope that as you turn through the pages of this report, you will be inspired by our patients and their stories, the gratitude of our healthcare professionals, and the difference you made over the last year, to join us on this leg of our journey.

We also take this opportunity to thank you for your steadfast support. We are motivated by your generosity and your commitment to improving the lives of others.

Together, the possibilities for exceptional health will always grow.

A handwritten signature in black ink, appearing to be 'Perry Esler'.

Perry Esler

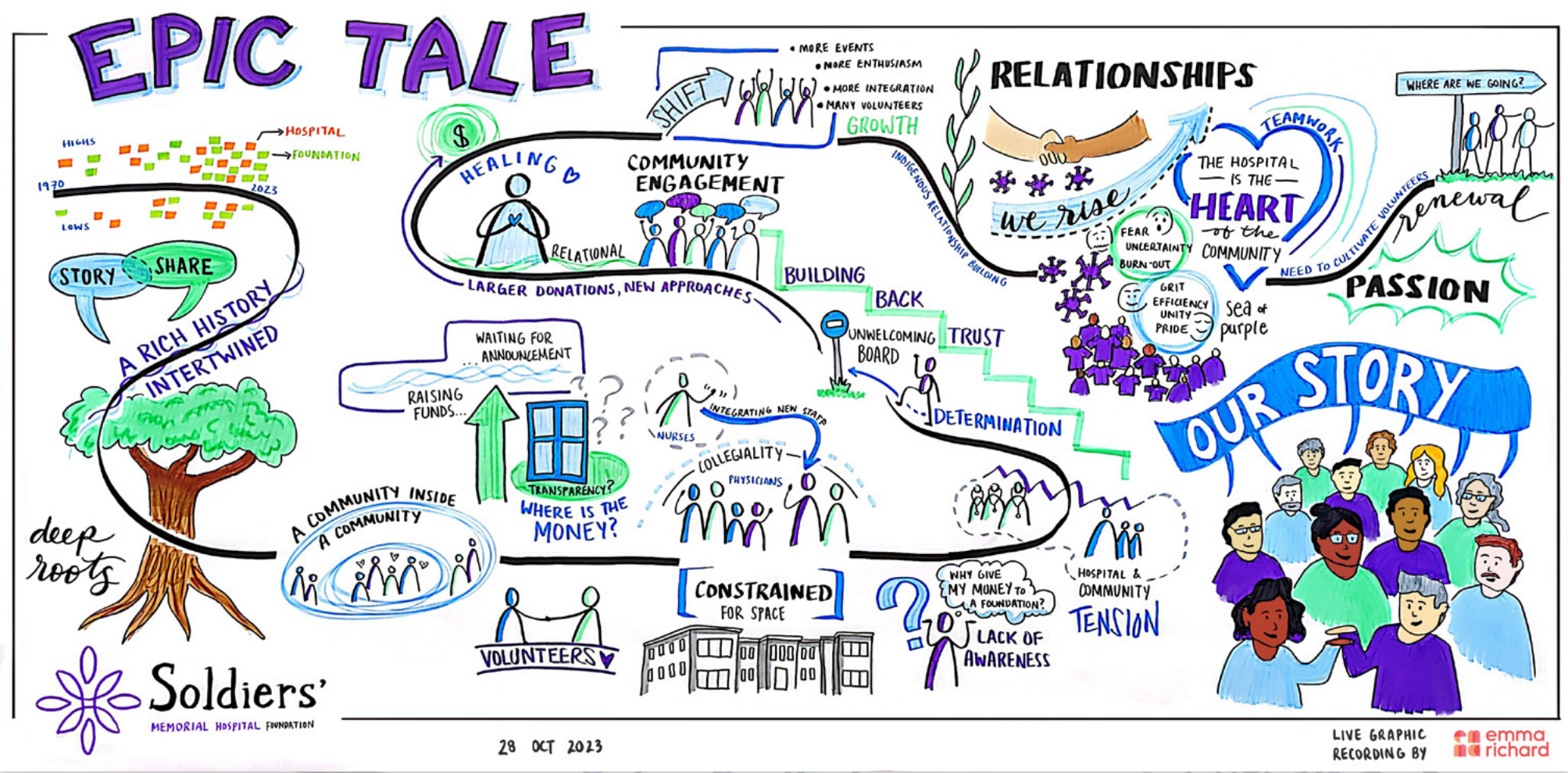
PRESIDENT AND CHIEF EXECUTIVE OFFICER


A handwritten signature in black ink, appearing to be 'Raquel Ness'.

Raquel Ness

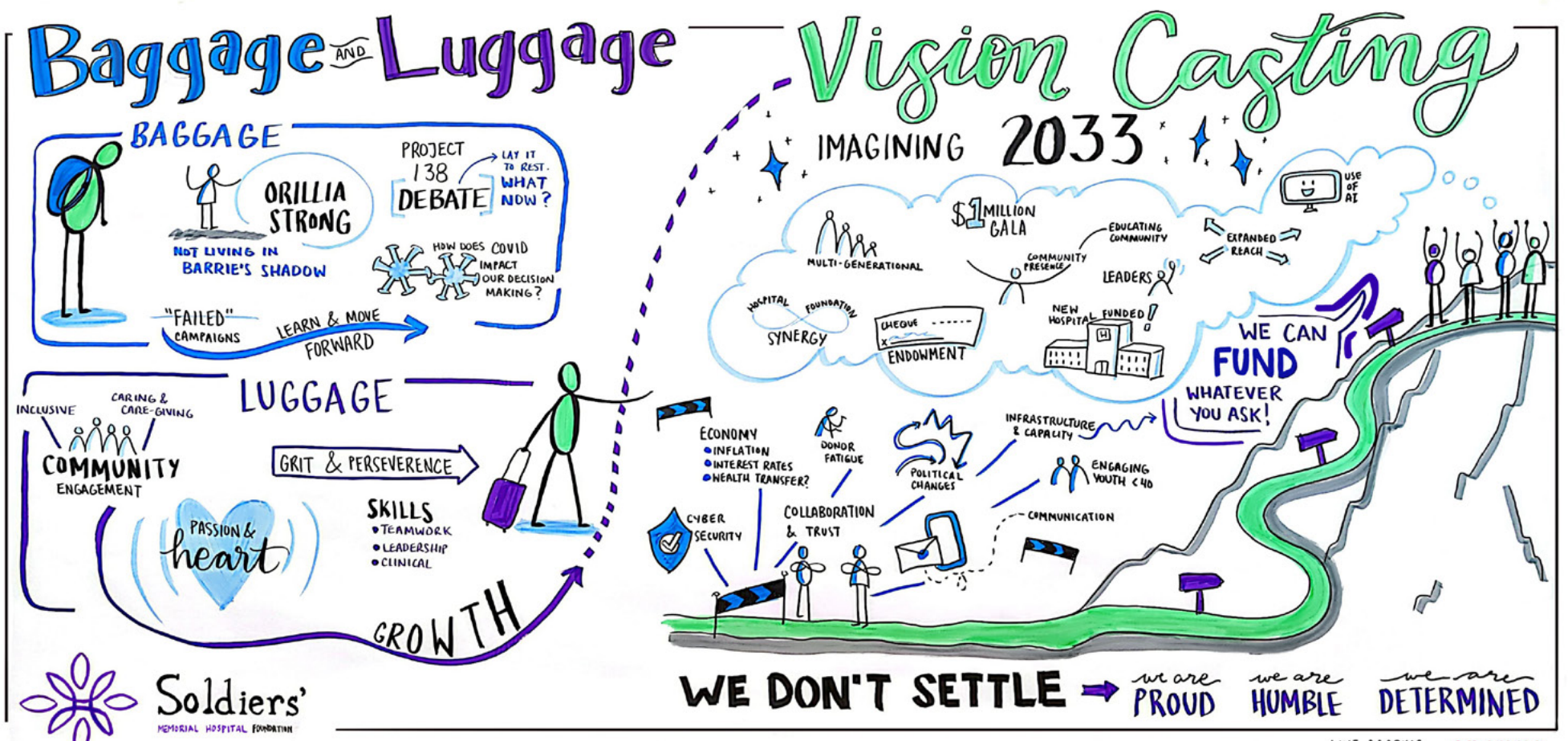
CHAIR, OSMH FOUNDATION BOARD OF DIRECTORS

On October 28th, 2023 the OSMH Foundation hosted a vision planning workshop with 35 stakeholders.



 "We reflected on the history of OSMH and the Foundation through the community's experience since 1970. The reflective exercise led to our Epic Tale." - Raquel Ness (Board Chair)

We discussed our baggage and luggage, what from our past is useful today and what may be packed away. The metaphor being 'take your luggage, pack away your baggage.'



28 OCT 2023

LIVE GRAPHIC RECORDING BY emma richard

 "This led to vision casting for our future and visualizing what we might be celebrating in 2033." - Perry Esler (President & CEO)

Orillia Resident Noreen Banks Gives a Lasting Legacy to OSMH

Noreen Banks moved to Orillia 7 years ago. She has settled into the easy-going nature of its small-town charm. It's different from the busy cities where she has lived before. Noreen traveled and lived across the globe, moving around with her late husband Clare for his work.

When they settled in Orillia, Noreen and Clare found that, based on their stage of life, they needed to rely on the hospital more often than anywhere else they've lived.

“Soldiers’ is the hospital that we used more than any other and the caregivers have always been number one.” – Noreen Banks

The experience that Noreen had with Soldiers’, from her own, to the care she saw given to Clare, has become an integral part of her legacy.

Noreen has made gifts to OSMH on many occasions; she often looks for ways to give back when she sees a need. Recently, Noreen had an opportunity to see her philanthropy at work when she toured the Neonatal Intensive Care Unit. “I was so moved. I saw a little tiny foot in an incubator, and I just prayed for him,” said Noreen.

Noreen has chosen to carry on her legacy of giving at Soldiers’. With her recent donation through a gift of securities and by including OSMH Foundation in her will, Noreen has ensured that she will support the health and wellbeing of her community for generations to come.

“I see the benefit of giving, absolutely.”



NOREEN WITH HER CHILDREN LISA AND GREG

When making the decision to include Soldiers’ in her will, Noreen’s two adult children Lisa and Greg were very supportive.

“My parents have always worked hard and instilled that ethic in my brother and me. With my mother’s history of giving and my father’s experience at the hospital, it was no surprise she would want to give back to the community in this way. We are very proud of her.” – Lisa, Noreen’s Daughter



Interested in learning more about making an impact through Legacy Giving? Visit our website. omshfoundation.ca/ways-to-give/leave-a-legacy-gift



MENTAL HEALTH SAFE ROOMS

1 in 5 Canadians will experience mental health difficulties each year, and the numbers continue to grow.

In May of 2023, we opened two mental health safe rooms in our Emergency Department. These rooms provide safety, privacy, and support to those in crisis and allow our staff to support the growing mental health needs in our communities.

This project was generously funded and supported by the Chippewas of Rama First Nation. Rama First Nation made a \$115,000 commitment to our hospital in support of mental health care and life-saving equipment.

The rooms have been used by patients every day since opening and, due to the quality of materials used, have not had any maintenance closures. This addition provides a safe environment for healthcare providers, patients, and those experiencing a mental health crisis.

OSMH's mental health safe rooms are having a positive impact on patients in need. They provide our patients with room to walk, and rest, and a chalkboard wall for creativity and expression.

Miigwetch (Thank you) to Chippewas of Rama First Nation for helping OSMH provide healthcare excellence to those in need of mental health support.



“This is the gold standard for these types of rooms. It shows that the community is seeing that there’s a need for mental health care and values the investment needed to provide the best care.”

– Brandon Lewicki, Program Manager of Mental Health Services



“Our population has increased and our patient volumes have almost doubled in the last six years. The community sees the hard work we do and the restrictions we have. It’s great to see our communities come together to help our Emergency Department.”

– Joice Antony, Program Manager of the Emergency Department



“Rama First Nation is proud to assist OSMH in providing a safe space for vulnerable patients experiencing mental health issues. It is rewarding to learn that so many have been benefited by the opening of these rooms in the hospital over the past year.

Rama’s partnership with OSMH continues to create opportunities for learning, developing and supporting all our communities in health and wellness.”

– Chief Ted Williams, Chippewas of Rama First Nation

“People who are in an emotionally or mentally fragile state need to feel safe and like they’re worthy of care. Having access to these new mental health rooms is so important because they give people like me, who are struggling or are in their darkest moments, the ability to just be ourselves in a place that is comfortable, private, and supportive.”

– Mental Health Patient Amanda S.

From Fear to Recovery

By Kim Goggins

I have lived in the Orillia area for 28 years and, for 26 of those years, I'd barely visited Orillia Soldiers' Memorial Hospital. That changed in 2022 when my diverticulosis turned to diverticulitis, resulting in me having to be admitted to OSMH five times between January and June.

I spent Easter, my anniversary, and my birthday at OSMH. It was still during COVID so sometimes, my husband could only drop me off at Emerg and I couldn't see him during my stay. I saw the hospital staff more than I saw family and friends. The last time I was admitted was in June with a perforated bowel. This time, it was really serious. I was told I would need to go into surgery later that day.

Surgery had been a looming threat for months and I had been building a care plan with my surgeon, Dr. Joshua Greenberg, whom I trusted implicitly. That plan did not involve getting rushed into surgery that day and I knew I wasn't ready for my life to change so quickly. I was terrified.

Fortunately, Dr. Greenberg advocated for my health and shared my care plan with the other surgeon. I was admitted to the hospital for four weeks and put on IV antibiotics, which helped me heal before surgery.

My surgery was challenging and took over six hours. Dr. Greenberg expertly performed a resection of the problematic area of colon, joined the two divided ends back together, and gave me a protecting loop ileostomy to allow the area to safely heal. Although the surgery was successful, it meant I had a temporary ostomy bag. You can live with an ostomy bag, but it adds many challenges. I wasn't ready emotionally for the changes ahead of me.

What gave me hope was Dr. Greenberg's confidence and surgical expertise. He told me that there was a strong possibility he could reverse the surgery in six months, and I would no longer need the ostomy bag. Sure enough, six months and four days after my initial surgery, he successfully reversed the procedure.

Since my reversal surgery, I have been able to go back to the life I enjoyed. Dr. Greenberg is an exceptional surgeon. He is intelligent, confident, and very modest. He was an important part of a health-care team that I trusted and who treated me - along with other patients - with kindness and empathy.

Even though I went through some traumatic experiences at OSMH, I feel comforted when I return. That is due, in large part, to the people who cared for me. We are so fortunate to have such incredible healthcare so close to home.



Old Equipment Gets A New Life

A hospital is like a home. Just like a home, you need to have a plan to replace items with a limited lifespan, like appliances, vehicles, or even the shingles on your roof.

Each year, our hospital follows a streamlined process to assess the greatest needs within the organization and prioritizes the items that are in need of repair or replacement. The items in need of replacement are often well loved and have helped to provide care for many patients over the years.

With support and donations from our communities, Orillia Soldiers' Memorial Hospital can purchase new parts and replace older equipment with newer, advanced models.

Whenever it is possible, our hospital will donate well-loved equipment to other facilities in need. From 2022 – 2023, OSMH replaced 59 stretchers in our Emergency, Surgical, and Outpatient Departments. Through this process, we were able to donate 21 stretchers, 10 cots, and two baby incubators to a hospital in need. These specific items have found a new home in Mariel, Cuba, fulfilling their strong need for new equipment.

When you donate to Orillia Soldiers' Memorial Hospital, you're not just supporting regional healthcare. We are proud to support the health and well-being of people who need it most, where they need it most.

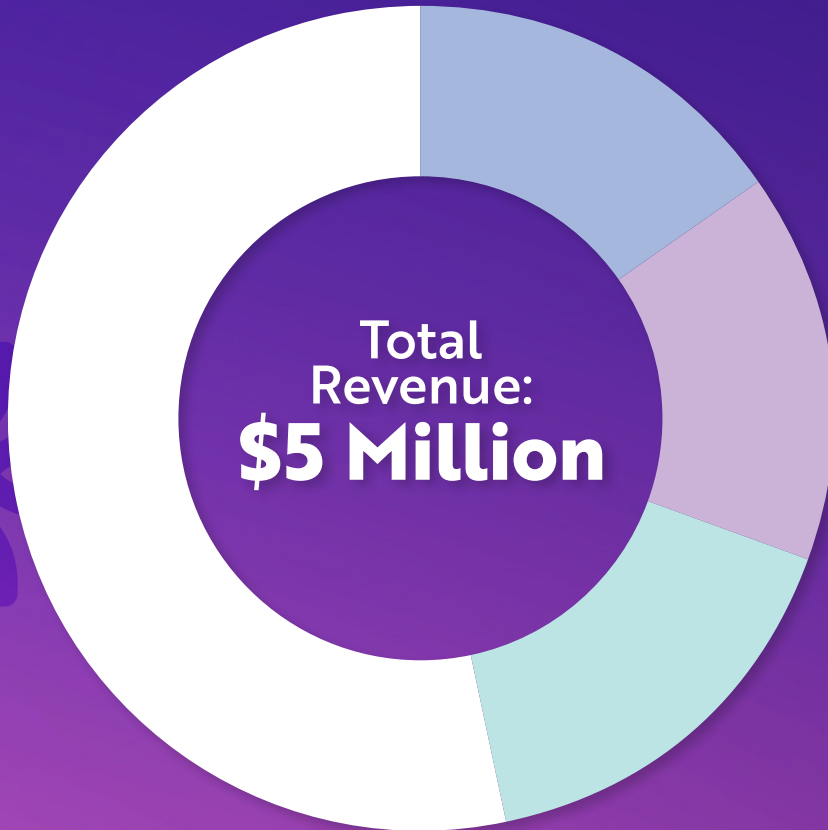


Medical supplies from OSMH arrive in Mariel, Cuba.



A nurse from a Mariel, Cuba medical facility tends to her young patient using recently donated medical supplies.

Foundation At A Glance 2023 - 2024



Sources of Revenue

- Philanthropic Giving 52%
- Investments and Other Income 17%
- Lottery 15%
- Events 16%



Our 2023/2024 audited financial statements are available on our website.
osmhfoundation.ca/about-us/#foundation-financials

\$3.5 Million in G



MRI

The new state-of-the art MRI has advanced imaging capabilities and is improving patient experiences. Story on page 12.



NUC MED SPEC CT

This advanced equipment allows healthcare providers to visualize and assess various bodily functions, which can be invaluable in diagnosing and managing conditions like cancer, thyroid disorders, kidney diseases, and heart conditions.



BED STRETCHER PLAN

OSMH replaced 59 stretchers in areas around the Hospital. By replacing the stretchers, the Hospital was able to donate the old ones. Story on page 9.



HYSTEROSCOPE

We asked, you answered. The new hysteroscope will make a difference in quality of life for women in our communities. Story on page 14.

Grants to Soldiers'



GIRAFFE WARMER

Thank you to our 2023 Charlee's Run participants and sponsors who supported the purchase of two Giraffe Warmers for our NICU.



OMNIBED CARESTATION

Creating a controlled, protected microenvironment for peaceful, fast healing for babies.



CENTRAL PATIENT MONITORS

These Monitors are used almost everywhere in our hospital, including the Emergency Room (ER), Operating Room (OR), Intensive Care Unit (ICU), and Neonatal Intensive Care Unit (NICU).



MENTAL HEALTH SAFE ROOMS

These new rooms have been used by patients every day since opening. Story on page 7.



SYRINGE PUMPS

Small but mighty, this vital piece of equipment removes the potential for human error when administering what is often lifesaving medication.



We are grateful for the community support that advances healthcare throughout our region.



“The advanced MRI unit and increased scope of services allow our imaging team to detect and diagnose medical concerns efficiently and enables fulsome support of disease management programs across the region.”

– Kate Smith, Director, Diagnostic and Therapeutic Services

Soldiers' New MRI Marks a Community Milestone

One of our biggest accomplishments in 2023 was the arrival and installation of the new state-of-the-art Magnetic Resonance Imaging (MRI) machine.

The purchase of the new machine is attributed to three years of community fundraising and the generosity of so many donors to bring advanced care to Orillia Soldiers' Memorial Hospital.


Now fully functional, our patients and healthcare team are expressing sincere gratitude for the major upgrade.

"Numerous patients have expressed appreciation for the reduction in scanner noise levels and the enhanced comfort provided by the larger dimensions of the scanner bore," says Andrew Mogg, MRI Charge Technologist, Diagnostic Imaging.

"We are delighted to hear such positive reviews and remain dedicated to continually enhancing patient care and satisfaction through the integration of advancing technologies and patient-centered design principles," said Chantel Grant, Manager of Diagnostic Imaging.

Thank you for helping to advance technology at Soldiers', making a difference in the lives of your community and the communities that rely on Orillia Soldiers' Memorial Hospital.



 **MRI MACHINES DETECT SOFT TISSUE CONDITIONS OR INJURIES, SUCH AS TUMORS, LIGAMENT, AND JOINT INJURIES, AND DISEASES**

 **SOLDIERS' PERFORMS OVER 9,600 MRI SCANS ANNUALLY**

 **THE NEW MRI HAS A LARGER, LESS CLAUSTROPHOBIC BORE**

 **THE NEW MRI MACHINE WOULD NOT BE POSSIBLE WITHOUT THE SUPPORT OF OUR COMMUNITIES**



“The new hysteroscope is extremely helpful. We are providing removal of uterine lesions, such as polyps and fibroids with improved visibility and accuracy and with less anesthetic. This is especially important for our most high-risk women. The funding is deeply appreciated by the surgeons and our patients.” - Dr. K Rheault, OB/GYN

Thank You for Supporting Quality Care for Women in our Region When we asked, you answered.

OSMH gynecologist, Dr. Kim Bremer asked for your support in the purchase of a new hysteroscope for the Soldiers’ Operating Room.

The hysteroscope is used for patients suffering from fibroids, non-cancerous tumors on the muscle of the uterus, or endometrial polyps, an overgrowth of the inner uterine lining.

By advancing the quality of equipment used during a hysteroscopy procedure, patients receive the highest standard of care. The new device improves visualization for our medical team, uses a safe saline solution and can prevent the need for more invasive and life-altering surgeries.

With your support we purchased a new hysteroscopic tissue removal device for Soldiers’ gynecologists.

DONOR SPOTLIGHT Shadowbox Learning Services Inc.

When hearing the need for a new Hysteroscope, Shadowbox Learning Services Inc. wanted to make a difference. The locally owned, family operated business made a generous donation to complete the remaining funds needed for the hysteroscope.

“We recognize the importance of equipping clinicians with advanced medical tools to enhance patient care. Our hope is that this investment leads to improved treatment outcomes for women within our community. We encourage other businesses and residents in Orillia and area to consider how they may support OSMH as well.”

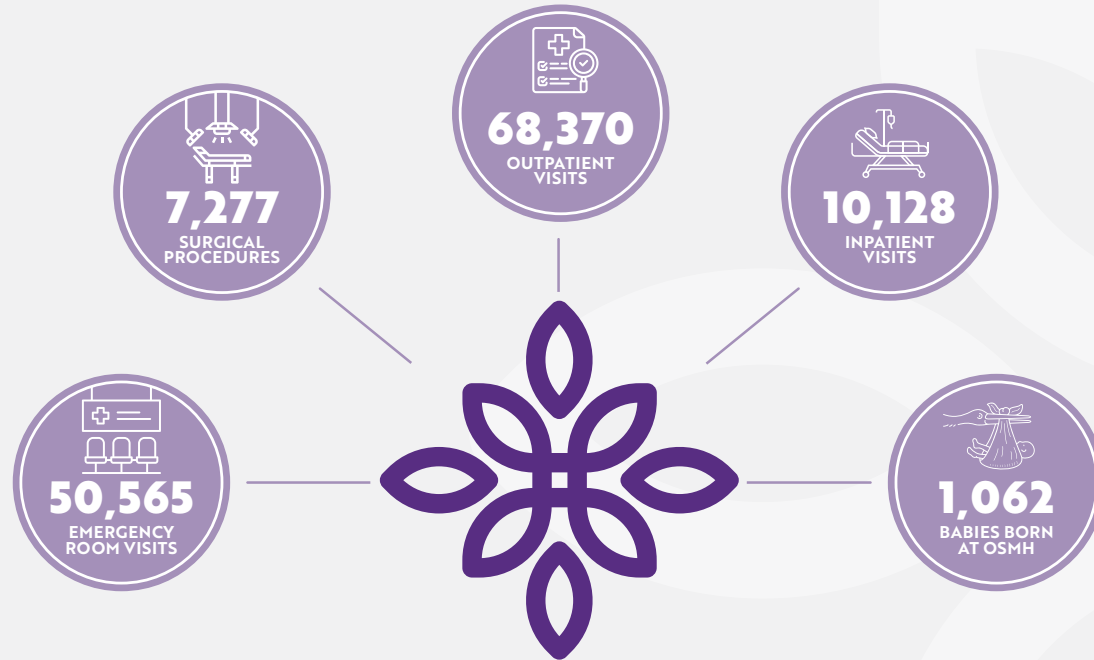
- Will McGarvey, President, Shadowbox Learning Services Inc.



Stefan McGarvey (left) & Will McGarvey (right)

OSMH At A Glance

APRIL 1, 2023 – MARCH 31, 2024



TOP 10 GEOGRAPHICAL LOCATIONS OUR PATIENTS COME FROM



RAMARA

BARRIE

GRAVENHURST

BROCK

KAWARTHA LAKES

ADJALA-TOSORONTIO

MNJIKANING FIRST NATIONS



OUR PURPOSE

We inspire and engage our communities to make a lasting impact by supporting healthcare excellence for Orillia Soldiers' Memorial Hospital.



TEAMWORK

We develop connections and support our team, hospital, and communities by encouraging collaboration and leading with our strengths.



INNOVATION

We champion innovation through creativity and forward-thinking to meet the evolving needs of our hospital and the communities we serve.



DETERMINATION

We are motivated by the generosity of our communities to enhance the lives of others and we are driven to make a lasting impact.

Our Team

Board of Directors



Raquel Ness
Chair



Dr. Nancy Harris
Past Chair



Chris Holtved
Treasurer



Julie Emery
Secretary



Ken Brownlee
OSMH Representative



Ken Bumstead
Director



Dr. Svetlana Carrigan
Director



Hanan Fahmy
Director



Natalie Little
Director



Greg Parker
Director



Mark Shivers
Director



Ryan Spurgeon
OSMH Representative



Carmine Stumpo
President & CEO, Orillia Soldiers' Memorial Hospital



Scott Walker
Director

Staff Team



Perry Esler
President & Chief Executive Officer
ppesler@osmh.on.ca



Joanna Gray
Director, Campaigns & Major Gifts
jlgray@osmh.on.ca



Heather Saba
Senior Annual Giving Officer (Contract)
hesaba@osmh.on.ca



Natasha Borutski
Senior Marketing & Communications Officer
nborutski@osmh.on.ca



Sarah Jean Allen
Signature Events Assistant
sajallen@osmh.on.ca



Christine Baguley, CFRE
Senior Philanthropy Officer
ccbaguley@osmh.on.ca



Cobi Colin
Operations Coordinator & Board Liaison
cacolin@osmh.on.ca



Sandy Davis
Donor Stewardship & Planned Giving Coordinator
smdavis@osmh.on.ca



Jennifer Frew
Senior Philanthropy Officer
jefrew@osmh.on.ca



Joanna Hicks
Annual Giving Coordinator
jwhicks@osmh.on.ca



Heather Price-Jones
Communications Officer
hepricejones@osmh.on.ca



Jeff Sieger
Data & Finance Associate
jsieger@osmh.on.ca

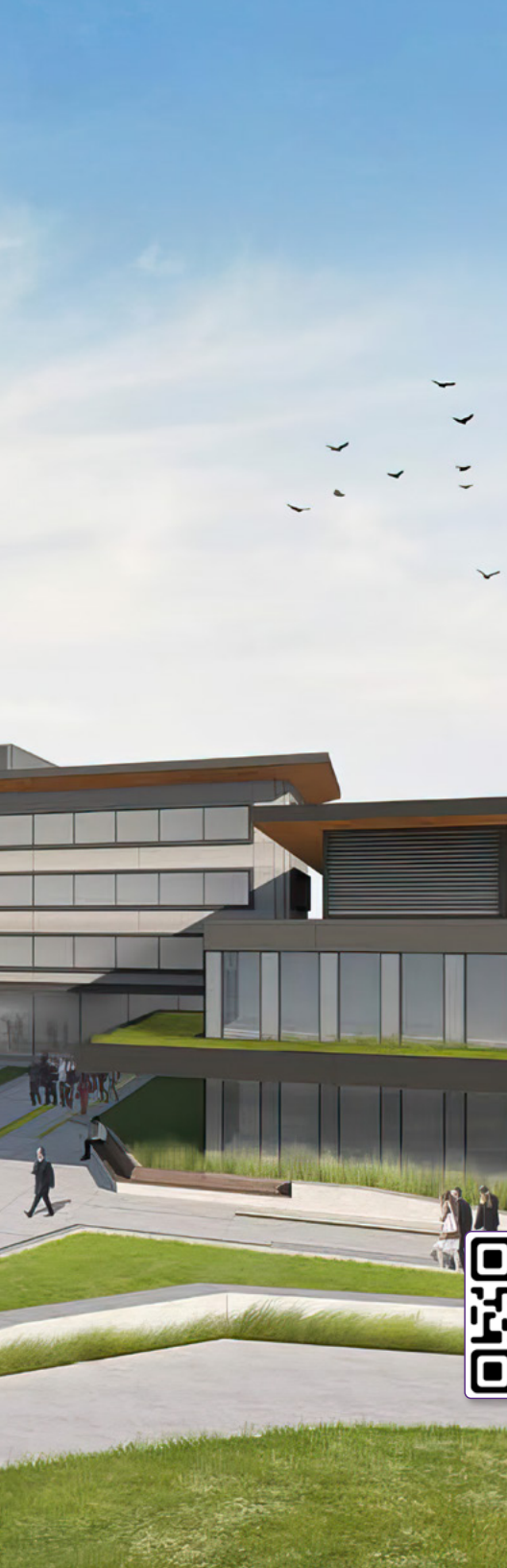


Kaitlyn St. Pierre, CFRE
Senior Annual Giving Officer, Maternity Leave

“We are excited for the challenge ahead of us. We will continue to meet the immediate health needs of the communities we serve, while at the same time, actively planning for the construction of a much-needed new hospital.”

– Carmine Stumpo, President & CEO, Orillia Soldiers’ Memorial Hospital





Future of OSMH

We know we need a new hospital in the future and that goal is firmly in sight.



Our population has grown twice as fast as the rest of Ontario in the past five years.



Our hospital has been running at over 100% capacity for the last two years.



We have the oldest hospital infrastructure in the region, with parts of our hospital over 101 years old.

Orillia Soldiers' Memorial Hospital had an exciting year. We continue to adapt to the record growth our community is experiencing as evidenced through the expansion of provincial leading integrated care services with our Couchiching Ontario Health Team partners, and the doubling of our surgical capacity at the hospital.

But still, our communities have grown twice as fast as the rest of Ontario in the past 5 years, we've been running at over 100% capacity for the past 2 years, and we have the oldest hospital infrastructure in the region.

It's clear that OSMH has outgrown its aged and undersized facility.

With a large scope of priorities and an estimated timeline of 10+ years, we want to ensure our growing communities continue to have access to enhanced, high-quality healthcare close to home, right now.

To support our healthcare team and our communities, we need to invest wisely right now in the areas that will have the greatest impact for patients and their families, today.

Your commitment to advance healthcare today immediately improves lives by providing critical treatments and resources and lays the foundation for a healthier future.



Looking Forward:

The future of healthcare for our region is full of growth. The prospect of expanding philanthropy in healthcare ignites hope and possibility for our future and the generations to come. That is where we are focused. We are looking forward to the future of healthcare and **The Start of Something New.**

Will You Join Us?



705-325-6464 | FOUND@OSMH.ON.CA

OSMHFOUNDATION.CA

146 MISSISSAGA STREET WEST, ORILLIA, ON L3V 3B3

REGISTERED CHARITABLE # BN 88932-1998-RR0001